



PROSPECTUS 2023 - 2024



**Gateway Institute of
Hotel Management**
(Affiliated by Gauhati University)

GIHM offers world-class hospitality business education. Our priorities are academic rigour, multicultural awareness and a caring approach to the personal development of our students. The graduates of our hotel management institute will be industry professionals and leaders who exceed customer and employer expectations through their persistent dedication to excellence.



Hotel Gateway Grandeur a unit Prerona Infrastructure Pvt Lit is a city landmark and a veritable showcase of modern comforts and warm hospitality. This maiden venture opened its doors seven years back in the month of Feb2011,keeping in mind the premium & mid market value segment.

Be it for pleasure or business, this hotel offers everything on a new level of luxury. The value is not just confined to the rooms, but also to the bars, cafes and restaurants. This business hotel has got the perfect ambience of every traveler in search of a comfortable stay. It is the perfect place where standards are not compromised but are raised up to a high level of their guest's expectation. Hotel Gateway Grandeur is the first hotel in the Northeast to open its door to a new segment of Tourism known as Health Tourism, a concept which is designed to pamper or improve the body and relax the mind. Services and safety is of the highest standards and is made available at the oddest of hours round the clock without any failure for a relaxed stay without any tension and fear.

Hotel Gateway Grandeur has completed glorious 8 years

with around two hundred employees in providing quality hospitality service for the people of Guwahati and those visiting Guwahati. During this tenure we have realized the immense importance of trained manpower in the hospitality industry in Assam and the North East has made us realize the infrastructure equivalent to the best in the field which will produce students ready to be absorbed into the Hospitality Industry.

And thus the Gateway institute of Hotel Management has come into being. Situated at Christian Basti, G.S Road, Guwahati, GIHM offers diploma and degree courses in Hospitality Management and Catering Technology.

The Institute runs its own training Commercial hotel at Guwahati attached to the campus. The students will be given real life exposure on the operation and management of commercial hotels while undergoing the course. This will help the student to know much more about the practical aspect of the hotel operation and this prepare them as General Manager in the years to come.





VISION

The Institute is adjacent to its own property at Guwahati, thus providing the students with real life exposure on the operation and management of commercial hotels while undergoing the course. This gives the students hands on experience about the practical aspect of the hotel operation so as to prepare them as General Managers in the years to come.

GIHM brings world-class hospitality business education giving priority to academic rigor, multicultural awareness and a caring approach to the personal development of the students. The graduates of the Institute will be industry ready professionals and leaders who exceed customer and employer expectations through their persistent dedication to excellence.



MISSION

Hotel Gateway Grandeur, a flagship property of Prerona Infrastructure Pvt. Ltd, defines comfort and hospitality in the city of Guwahati. Since its inception, Eight years back in 2011, be it for pleasure or for business, the leading choice of travelers to Guwahati has invariably been this landmark hotel of the city. By virtue of sincerity and subtlety, Gateway has earned itself the expertise and experience that can define hospitality with a new dimension altogether.

The best in class service by Gateway for glorious 8 years with around two hundred employees to the business traveller to the city has set a new benchmark thus understanding the need for the immense importance of trained manpower in the hospitality industry. The acute shortage faced by the hospitality industry in Assam and the North East has made us realize the need for a proper Hotel Management Institute with infrastructure equivalent to the global standard which will produce students ready to be absorbed into the Hospitality Industry. And thus the Gateway Institute of Hotel Management has come into being, offering Diploma and Degree courses in Hospitality Management and Catering Technology.



"Take up one idea. Make that one idea your life--think of it, dream of it, live on that idea. Let the brain, muscles, nerves, every part of your body, be full of that idea, and just leave every other idea alone. This is the way to success."

-Swami Vivekananda

OUR DIRECTOR'S DESK

I, on behalf of Gateway Institute of Hotel Management, Welcome you to this new and promising school of Hotel Management. Our sole endeavor is to equip the young and bright students like you with skills to take on the fascinating and glamorous world of Hospitality and Service Industry.

Hospitality and tourism is one of the world's largest, most dynamic industries. It is vast, broad variety and an enormous number of jobs across the globe. In fact, according to the World Travel and Tourism Council, hospitality and tourism employs more than 260 million people worldwide and career prospects in the industry remain strong. Year after year, hospitality and tourism is among the fastest-growing industries in the world. With its size, strong track record of growth such tremendous interest from a large number of students. And today the industry is more fast-paced and competitive than ever. The hospitality industry is very diverse and includes a wide range service related to food, accommodation, entertainment, and recreation. A qualification in hospitality equips you with the expertise and skills you need to work in management or operations in this, the world's fastest growing industry. And the skills you learn and the knowledge you will acquire, both as part of your course and on-the-job, are easily transferable - you can work all over the world in any of the hospitality establishments. With the ongoing pace of growth, the hospitality industry has already set the mark for the other industries.

The faculty who are selected with lot of care dedicated and helps in the academic progress of the students while updating their professional and personal development. The students are encouraged to undertake challenges and we are committed to helping them to prepare their future and to succeed in their endeavors. Change and challenge are common in any field and one should be prepared to seize the opportunity as they arise. As in so many areas of life sound planning and preparation are the keys to success. One has to be ready to meet the challenges. The professional development programmes and courses offered by the college prepare the students to capitalize their potential to the fullest extent. We will remain committed to the development of higher caliber professionals for the hospitality industry.

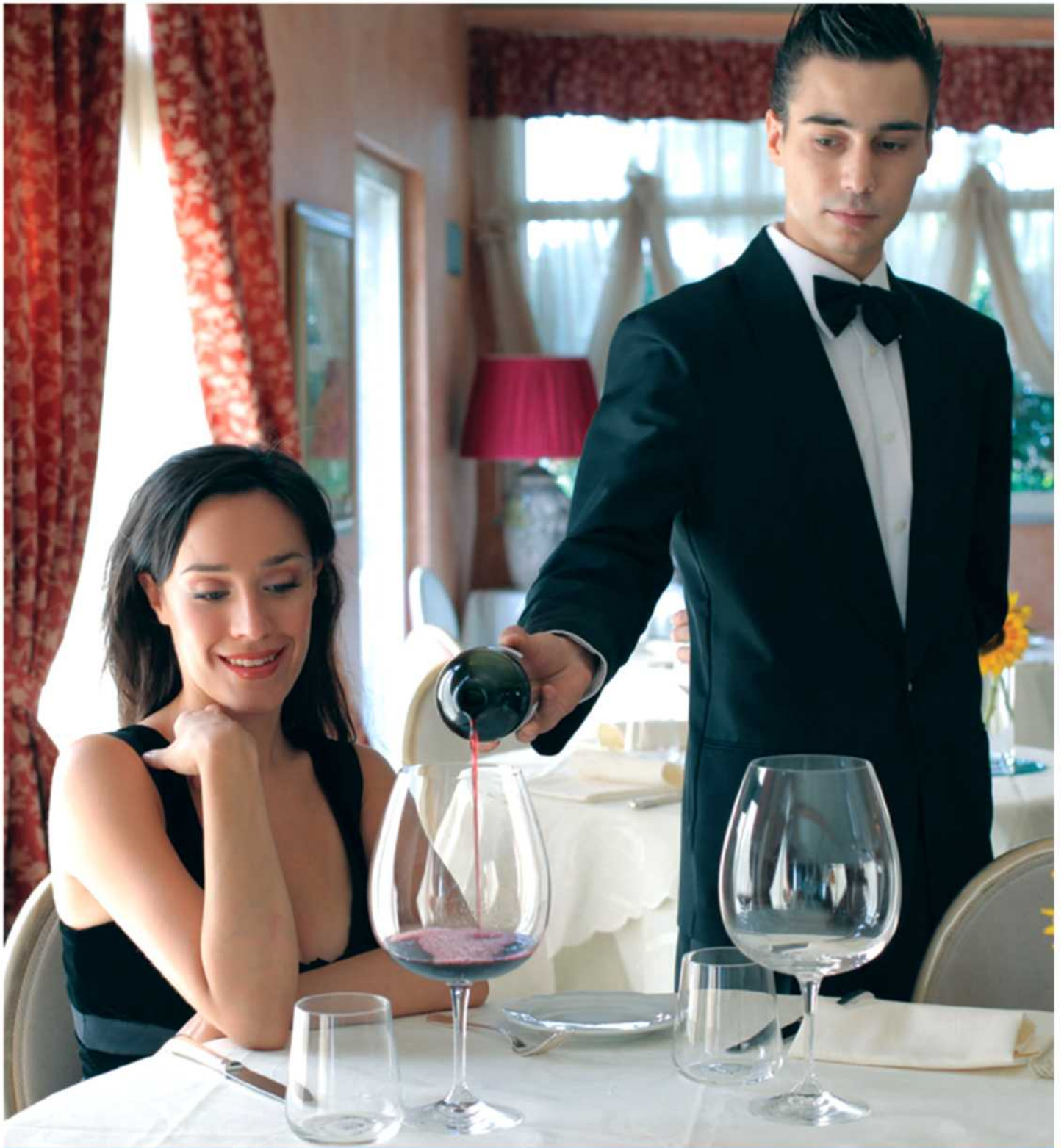
Life is not about finding yourself. Life is about creating yourself. You must expect great things of yourself before you can do them. You've got to get up every morning with determination if you're going to bed with satisfaction.

Welcome to my family!
Best Wishes

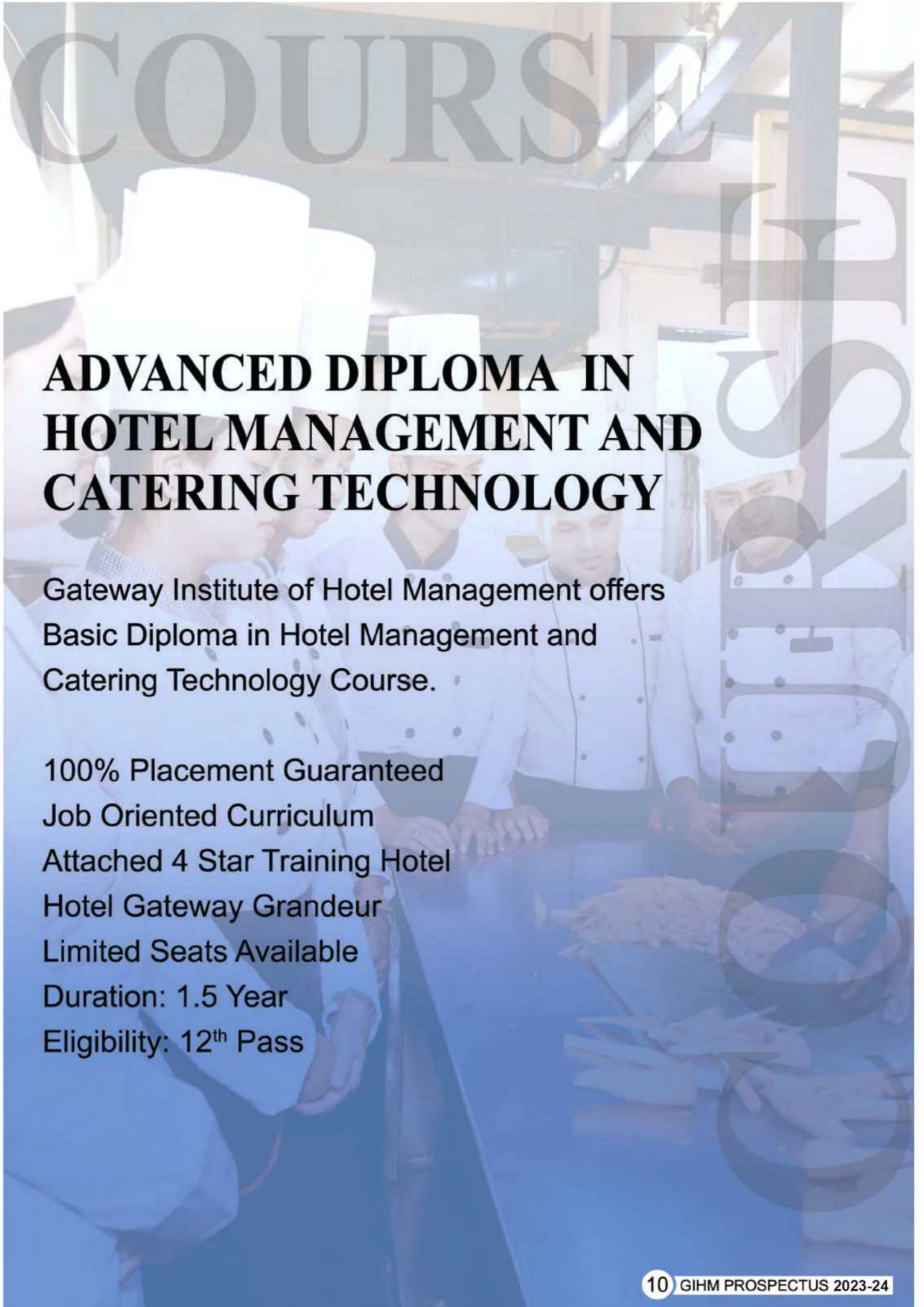
Tulika Hazarika, Director

"I believe that the only courage anybody ever needs is the courage to follow your own dreams."

_Oprah Winfrey







ADVANCED DIPLOMA IN HOTEL MANAGEMENT AND CATERING TECHNOLOGY

Gateway Institute of Hotel Management offers
Basic Diploma in Hotel Management and
Catering Technology Course.

100% Placement Guaranteed
Job Oriented Curriculum
Attached 4 Star Training Hotel
Hotel Gateway Grandeur
Limited Seats Available
Duration: 1.5 Year
Eligibility: 12th Pass



COURSE

BBA IN HOTEL MANAGEMENT AND CATERING TECHNOLOGY

Gateway Institute of Hotel Management offers
Basic Diploma in Hotel Management and
Catering Technology Course.

100% Placement Guaranteed
Job Oriented Curriculum
Attached 4 Star Training Hotel
Hotel Gateway Grandeur
Limited Seats Available
Duration: 3 Years
Eligibility: 12th Pass

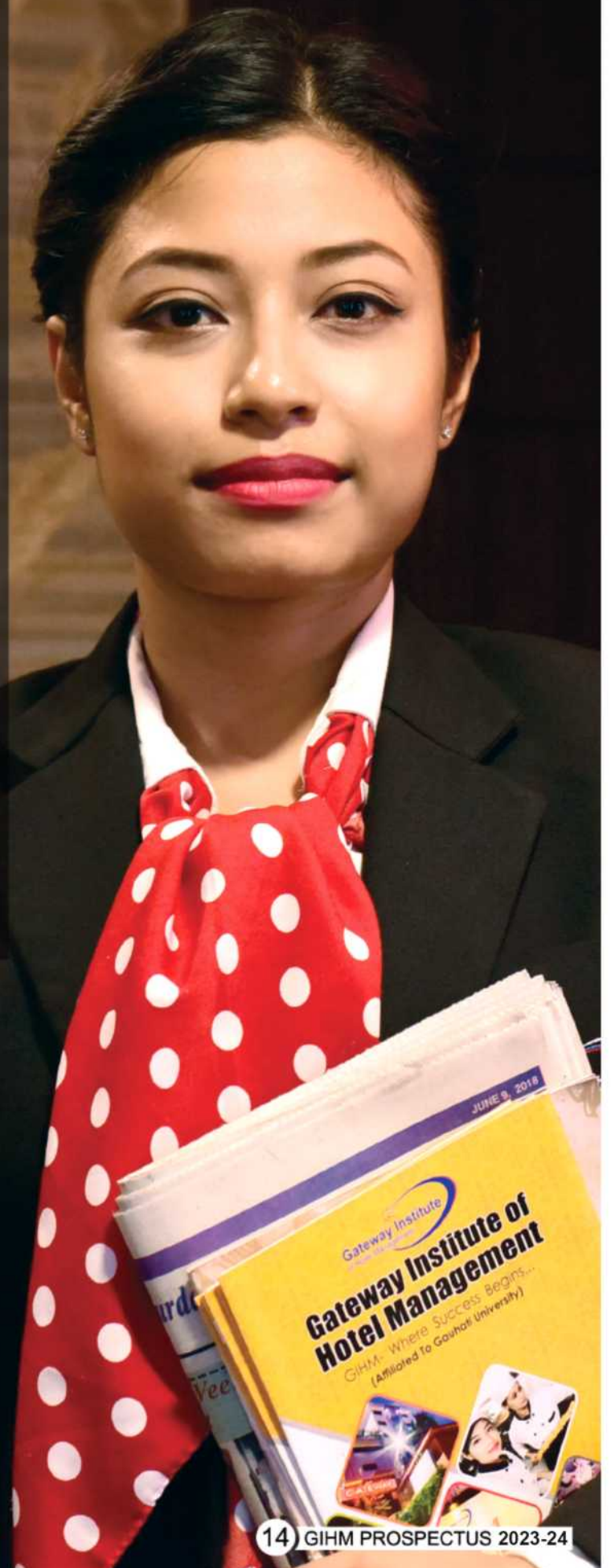


ELIGIBILITY

A pass in class 12 examination or its equivalent with English as one of the Subjects. Those appearing in Class 10+2 or equivalent examination can also appear Entrance Test followed by Group Discussion & Personal Interview of the short listed candidates to be held at all major cities of the Assam. Upper age limit : 22 years as on 1st August, 2019.

Application Form:

Download Application Form from www.gatewayihm.com or collect Prospectus & Application Form from GIHM Campuses on cash payment of Rs. 500/- or request by Cheque / DD in favour of "GATEWAY INSTITUTE OF HOTEL MANAGEMENT" payable at Guwahati



INSTRUCTIONS AND PROCEDURE FOR OFF-LINE APPLICATION FORM

1. Download Application Form
2. Please read the instructions and proceed carefully before you start filling Application Form.
3. Candidates are advised to attached recent passport size photograph.
4. Session should be filled by the candidates while filling up the form as follows:

Example: 1. For 3 Years Course like BBA: 2019-2022

2. For 1.5 Year Diploma Course: 2019-2020

FEES STRUCTURE

BBA in Hotel Management and Catering Technology

Tuition Fee: Rs. **50000/-** Semester

Admission Fees : **15000/-**

Hostel Fees :

Security Deposit Rs. 5500/- Rs. 5000/- month

Bus Fees:

Registration Rs. 500/- Rs. 1500/- month

Advance Diploma in Hotel Management and Catering Technology

Tuition Fee: Rs. **50000/-** Semester

Admission Fees : 5000/-

Hostel Fees :

Security Deposit Rs. 5500/-

Rs. 5000/- month

Bus Fees:

Registration Rs. 500/- Rs. 1500/- month

Basic Diploma in Hotel Management and Catering Technology

Tuition Fee: Rs. **50000/-** Semester

Admission Fees : 5000/-

Hostel Fees :

Security Deposit Rs. 5500/- Rs. 5000/- month

Bus Fees:

Registration Rs. 500/- Rs. 1500/- month

Application Form:

Download Application Form from

www.gatewayihm.com or

collect Prospectus & Application Form from

GIHM Campuses on cash payment of Rs. 500/- or

request by Cheque / DD in favor of "GATEWAY

INSTITUTE OF HOTEL

MANAGEMENT" payable at Guwahati



FACILITIES



LIBRARY

The Institute has a library enriched books on Management, Computer Science, Food Production, F & B Service, Front Office, House Keeping and other Allied subjects of Indian and Foreign publications.

Students Activity Centre

The College Houses a well furnished student's activity centre to encourage students to participate in co--curricular activities. The annual cultural and sports extravaganza GIHM Fiesta provides the students with a platform to showcase their talents in the fields of cooking, art and culture.

Counseling Cell

The Institution has a counseling cell to consult about the academic and other problems faced by the students. The student may take the opportunity through the counseling arranged over a discrete interval of time by the counseling cell.

A photograph of a computer laboratory. Several students in white shirts and dark trousers are seated at desks, working on computers. One student in the foreground is looking at a monitor. In the background, another student is standing and looking at a computer. The room has large windows with curtains and a ceiling fan.

COMPUTER LABORATORY

At present Gateway Institute of Hotel Management has a well equipped Computer lab having latest configured machines, which offer state-of-the-art computer facilities to the students with for student and computer. All the machines are connected by W_FI with 24 hours internet facility. The laboratories provide ample time and opportunity to the students for gaining practical efficiency in this field.

HOSTEL & BUS SERVICE

Gateway Institute of Hotel Management has separate well-furnished hostels for Boys and Girls. The students who are not staying at hostels can also avail the facility of the Bus Service after bearing the require fee for its service.

PERSONALITY DEVELOPMENT CELL

Experts and psychologists pay special attention to the personality development of the students. Emphasis is given to improve the communication skills, analytical approach, reasoning and decision making abilities of the students. Meditations and Yoga classes are also arranged to enhance their concentration power and develop their spiritual aspects.

FACULTY DEVELOPMENT

The Institute involved in nurturing its human resources by deputing its faculty members in various faculty development programmes, workshop, seminars etc. organized and conducted by premiere management and technical institutes. Faculty development programmes are also organized in the institute and conducted by eminent resource persons from varied fields of excellence.

GUEST LECTURE

Recognizing the need to expose the students to real life challenges, a number of Guest Lectures are scheduled throughout the entire programme period. Eminent scholars & Professionals and Senior Professors from reputed Universities often pay visit as Guest Lecturers.



WORLD CLASS HOSPITAL





Gateway Institute
of Hotel Management



BUSINESS EDUCATION



LEARNING RESOURCES

The Institute possesses a learning Resource Cell (LRC) having equipment like LCD projector, Multimedia computers, Overhead Projectors, Photostat Machine and other important equipment's needed by the students and faculty members to impart training in the classrooms as well as laboratories to maintain the standard and quality of education.

METHOD OF INSTRUCTION

The range of teaching methods used in the programmes include formal lectures followed by-Discussions | Case Studies | Group Discussions | Col- lateral Readings | Presentations | Role Plays etc.

Teaching aids such as Over head Projector, Liquid Crystal Displays and Video Films are extensively used. In addition to classroom activities, seminars and workshops are conducted frequently as a part of the learning process.

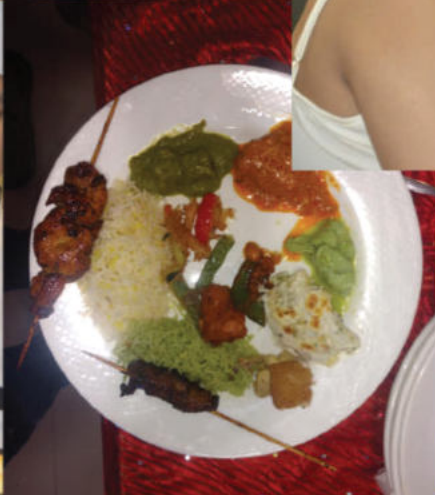
EDUCATIONAL TOURS

- Industrial tour for students of Professional courses like - Management, Computer Science & Commerce,
- Hospital visits & visit to Psychological Institutes for applied Psychology Students &
- NGO's Community Health Care Centres visit for Social work Students

are arranged from time to time to give the students first-hand knowledge and practical exposure of the theoretical paradigms. Students are required to submit write-ups and make presentations in the class, which promote team spirit and inter-personal learning.



GIHM FIESTA





PLACEMENT

PLACEMENT

The Institute has a dedicated placement Cell which provides Placement Assistance to all the students enrolled in different programmes of the Institute. The Placement Officer acts as a catalyst in facilitating the process of interaction between the students and the prospective representatives of the concerned recruiting Houses. Both on-campus and off-campus interviews are arranged regularly. Several International Hotel Chains have been regularly recruiting students of Gateway Institute of Hotel Management from time to time.

EDUCATIONAL LOAN

A student admitted into any programme of Gateway Institute of Hotel Management can avail Educational loan from various banks subject to the fulfillment of the banks terms and conditions Gateway Institute of Hotel Management has signed MOU with various nationalized banks for easy access and single window facility for student loan



RULES AND REGULATIONS

1. Discipline must be maintained in the institute at all time
2. Misconduct in the shape disobedience with the authorized / Faculty members will not be tolerated. Non observation of proper discipline may lead the student of suspension or expulsion from Gateway Institute of Hotel Management.
3. The syllabus given to the students can be changed or altered keeping in view the latest technologies and developments.
4. Every students must carry his/her identity card with him/her and produce it when demanded by any authorized person (regular student must be submit/ produce i-card in the security counter before entering the institute. Without i-card, student will not be permitted). A duplicate i-card can be obtained on payment of Rs. 200/-.
5. Fee once paid is not be refundable for any reasons under any circumstances.
6. Students must be punctual and regular both in theory and in practical, failing which intimation will be sent to their house by post.
7. A student who is defaulter in payment of outstanding dues are cleared.
8. Course fee will not include uniforms
9. If a student does not turn up within 15 days without notification, his/her registration will be cancelled.
10. Regular students must maintain minimum 75% attendance for appearing in final examination.
11. Smoking / Chewing of tobacco is strictly prohibited inside the institute.





**GATEWAY INSTITUTE OF
HOTEL MANAGEMENT**

Sethi Trust building, Unit 2, 7th floor, GS Road,
Opposite of Roodraksh Mall , Bhangagarh, Guwahati - 781005

Ph. 9127061000/9127062000

gihm.ghy@gmail.com

w w w . g a t e w a y i h m . c o m